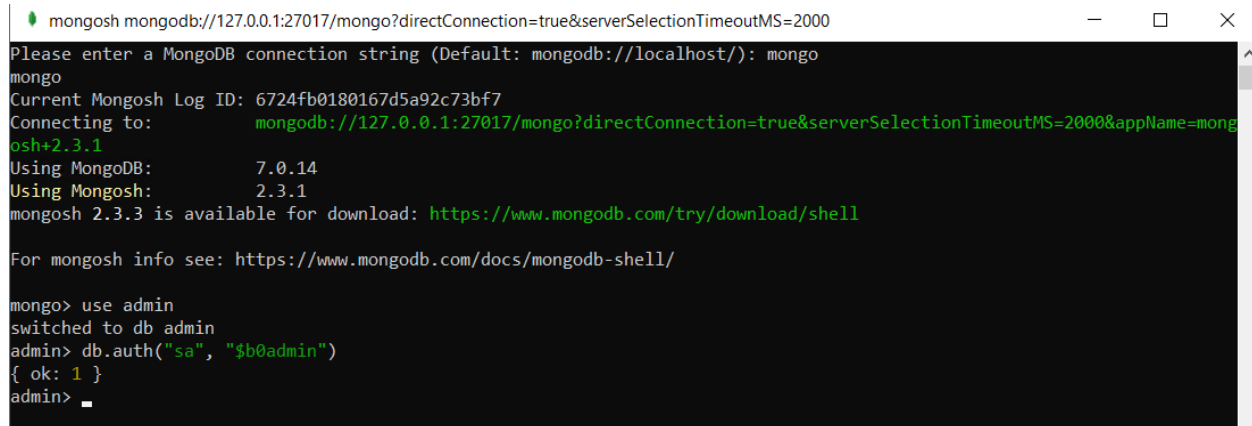




Web UI installation

2 or more instances

1. Open Mongosh
2. Type mongo
3. Type use admin
4. Authenticate admin with the command: db.auth("sa", "\$b0admin")



```
mongosh mongodb://127.0.0.1:27017/mongo?directConnection=true&serverSelectionTimeoutMS=2000
Please enter a MongoDB connection string (Default: mongodb://localhost/): mongo
mongo
Current Mongosh Log ID: 6724fb0180167d5a92c73bf7
Connecting to:      mongodb://127.0.0.1:27017/mongo?directConnection=true&serverSelectionTimeoutMS=2000&appName=mongosh+2.3.1
Using MongoDB:      7.0.14
Using Mongosh:      2.3.1
mongosh 2.3.3 is available for download: https://www.mongodb.com/try/download/shell

For mongosh info see: https://www.mongodb.com/docs/mongodb-shell/

mongo> use admin
switched to db admin
admin> db.auth("sa", "$b0admin")
{ ok: 1 }
admin>
```

5. Type use nameofthenewinstance.

6. Create the User

```
db.createUser(
{
  user: "appUser",
  pwd: "appUser6421",
  roles: [ { role: "readWrite", db: "nameofthenewinstance." } ]
}
)
```

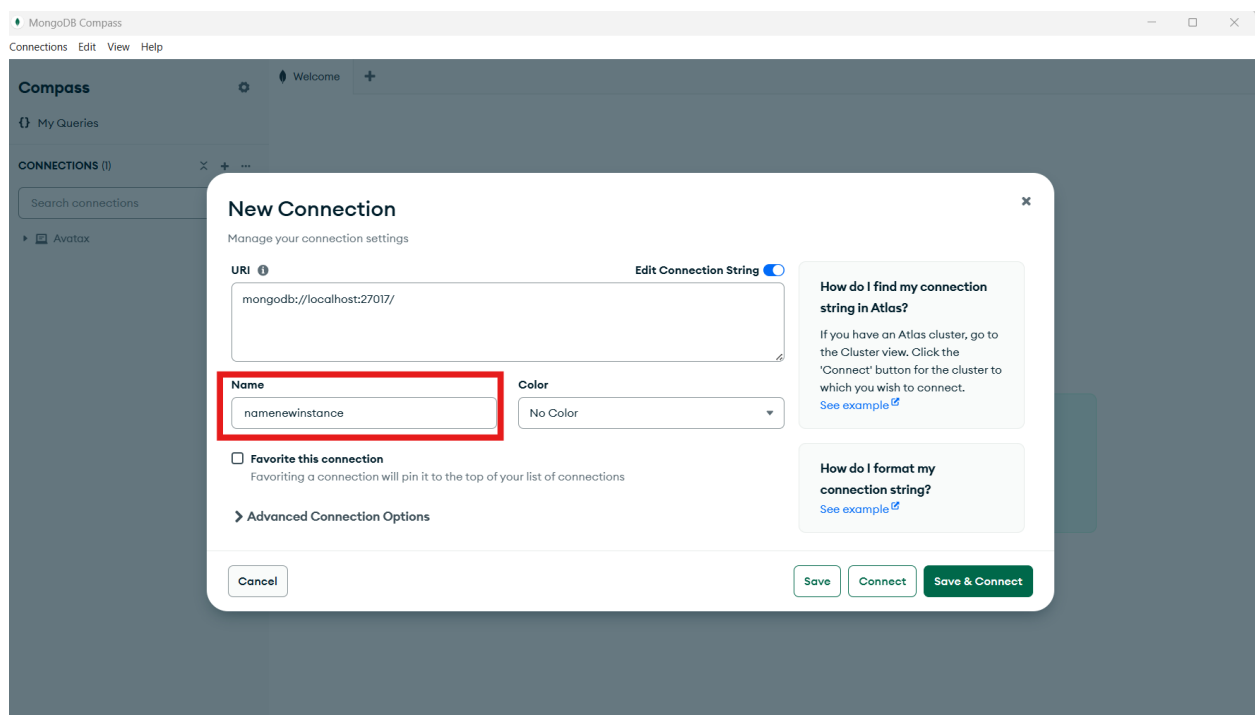
```

admin> use Sunset_Live
switched to db Sunset_Live
Sunset_Live> db.createUser(
...  {
...  user: "appUser",
...  pwd: "appUser6421",
...  roles: [ { role: "readWrite", db: "Avatax" } ]
...  }
... )
{ ok: 1 }
Sunset_Live>

```

db.auth("appUser", "appUser6421")

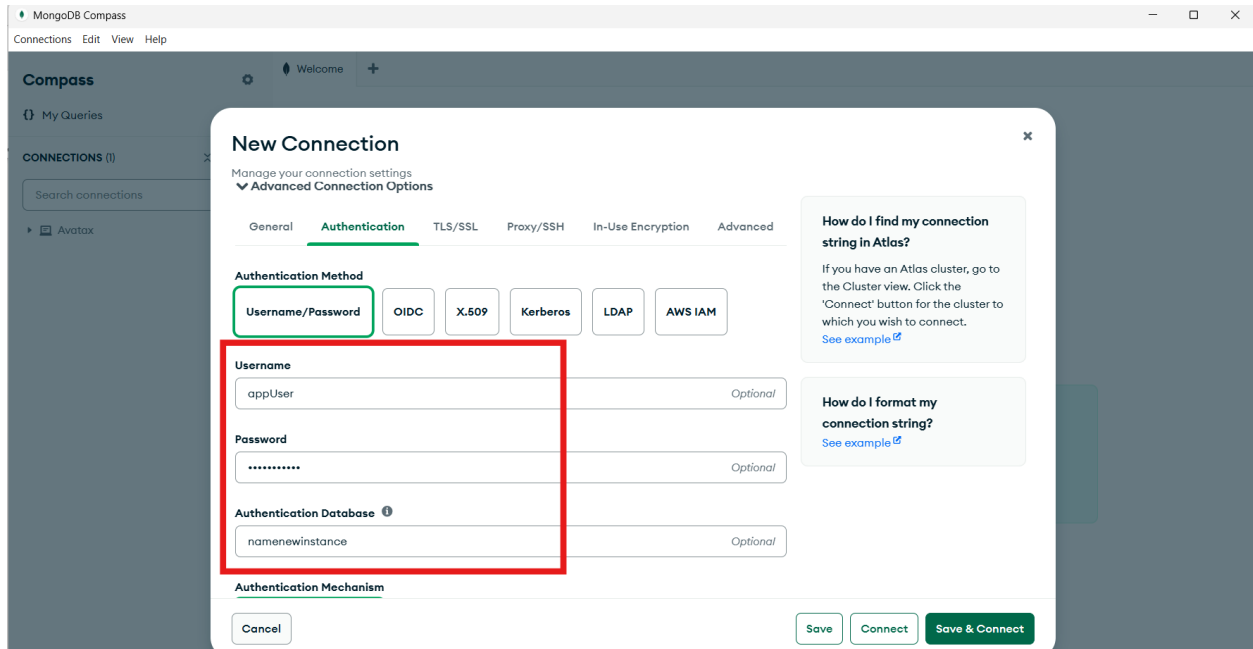
Then in the mongodb compass add a connection name and in the server set your type of connection



On the Authentication, tab add the user details created for the WebUI database step 2.3.4

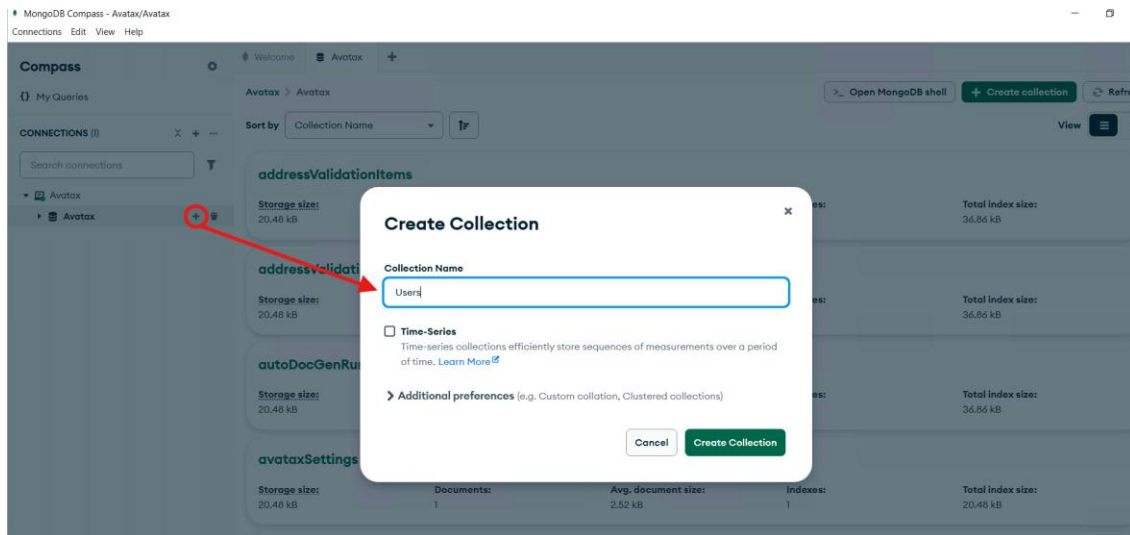
User : appUser

Password: appUser6421

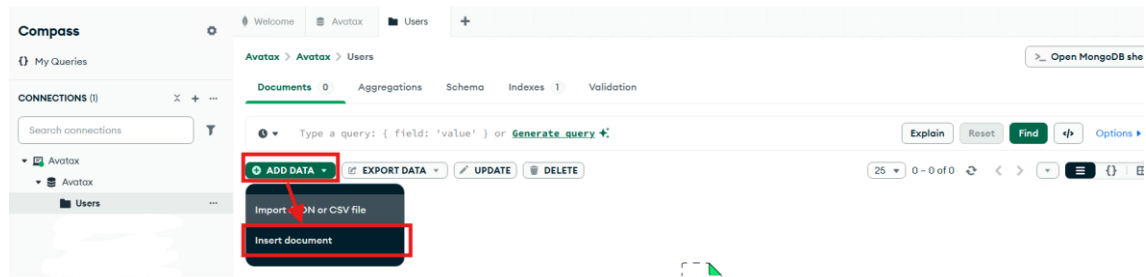


Then press “save and connect”.

Create a folder named “users” (do not use capitals letters) under the collections.



Then go to the file “user”, right click and press insert a document



A screen pops up, paste the below script

Insert Document

To collection Avatax.Users

```
1 {
2   "_id": "admin@mail.com",
3   "DisplayName": "Admin",
4   "Password": "a6af87ab5bb73bebbfcfab9626f9b6c3a8b5fe4f",
5   "Roles": [
6     "admin"
7   ],
8   "Active": true,
9   "Blocked": false,
10  "FailedLoginCount": 0
11 }
```

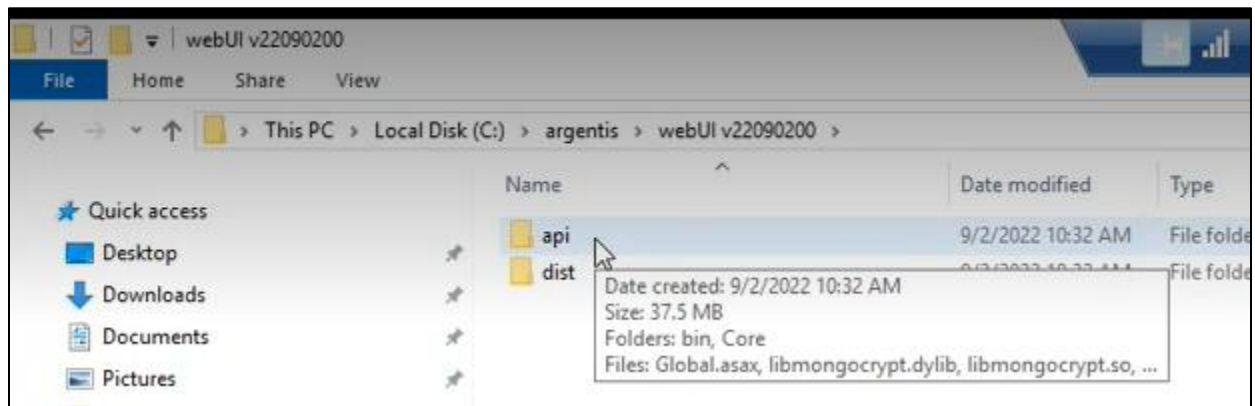


```
{
  "_id": "admin@mail.com",
  "DisplayName": "Admin",
  "Password": "a6af87ab5bb73bebbfcfab9626f9b6c3a8b5fe4f",
  "Roles": [
    "admin"
```

```
1,  
"Active": true,  
"Blocked": false,  
"FailedLoginCount": 0  
}}
```

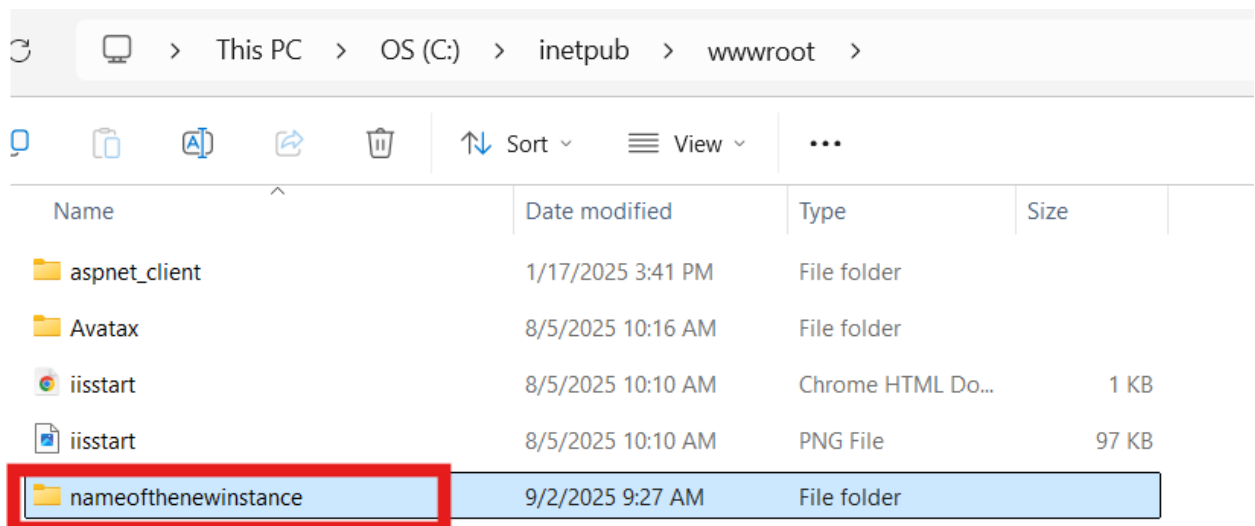
1. Creating the WebUI as an application.

On step 1, you downloaded the application, you should save it in a folder as shown:

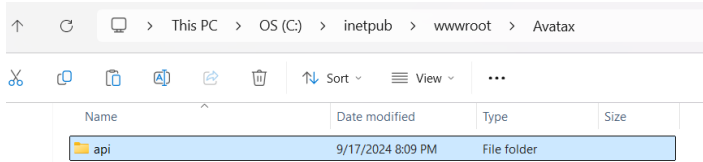


4.1 Configuring the application in IIS

Go to the path shown below and create a folder for **nameofthenewinstance**.



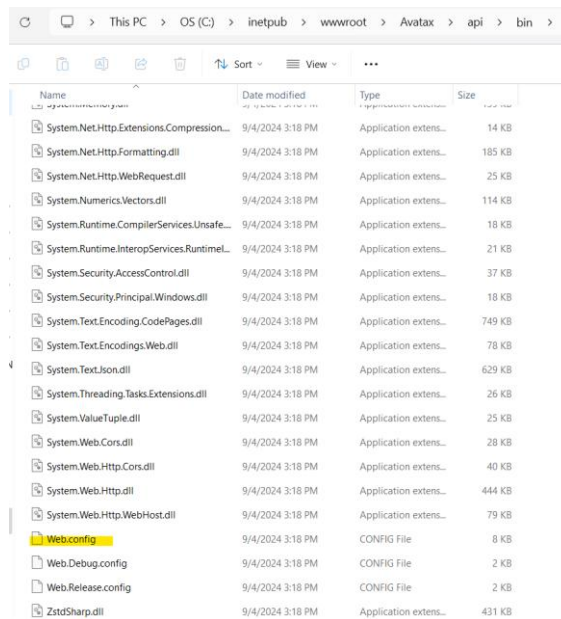
Then copy the folder “api” of the solution and take it to the above location



Inside “Api” folder there should be a document “Web.config”.

If it isn’t, then look for it in the “bin” folder; copy it and put it in the “api” folder.

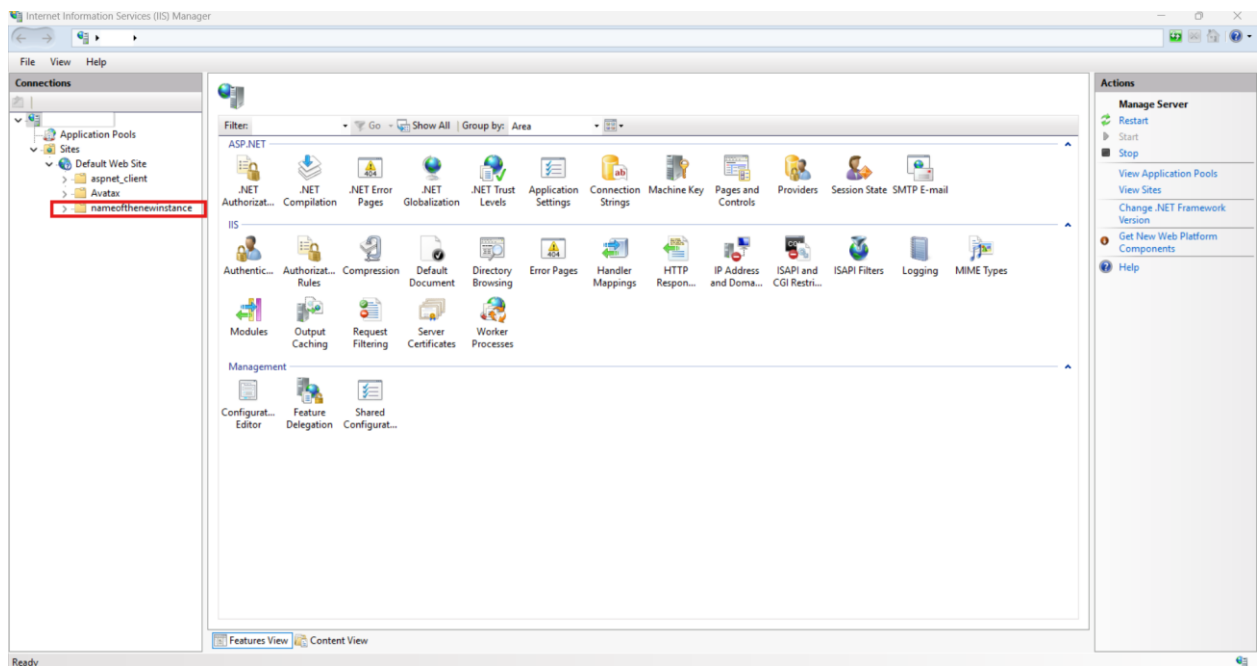
The “Web config” is a document that indicates to IIS that **nameofthenewinstance** is an application and explains how it works.



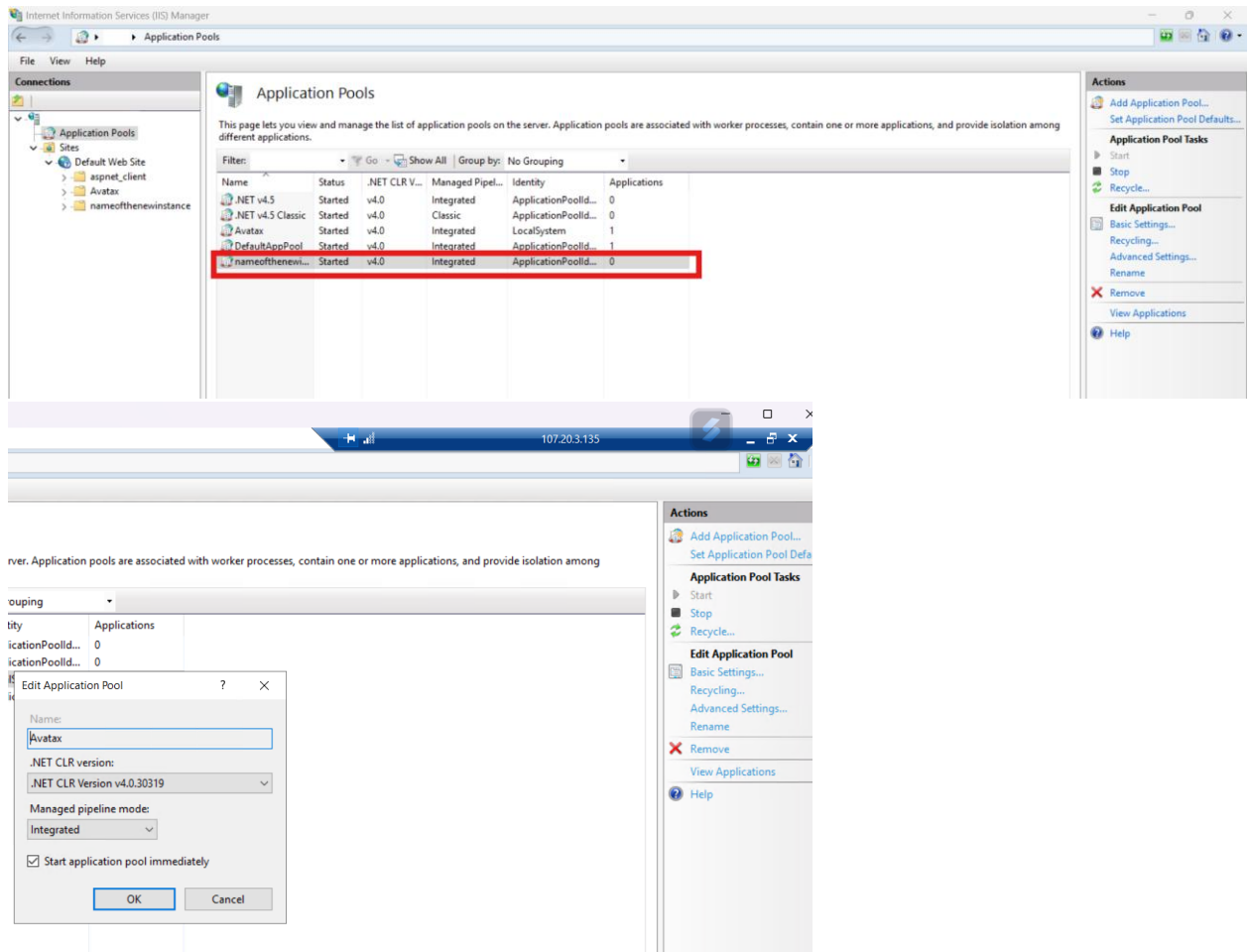
Access to the IIS



check if the application is already created.



Each application runs with a process, to configure it, it is necessary to create an application pool in IIS.
So press on “Application pools”, select add application. Then configure one as shown:



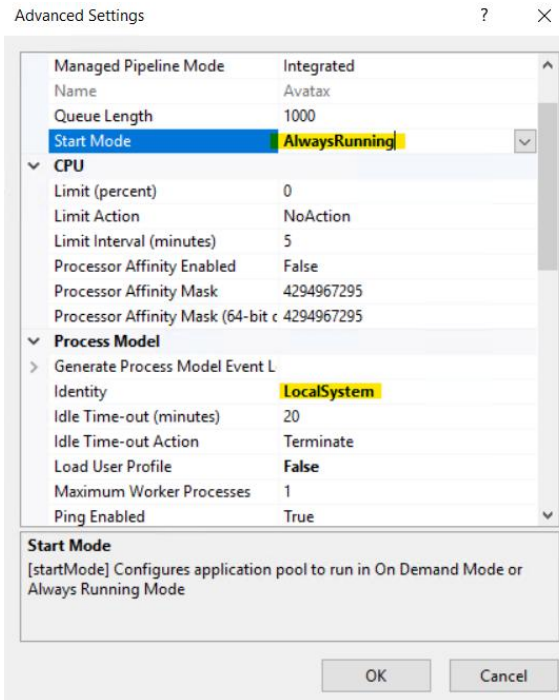
Some settings must be changed in the Application tool just created.

In order to do so, click on “Advanced settings” (right side of the screen) and make the below changes:

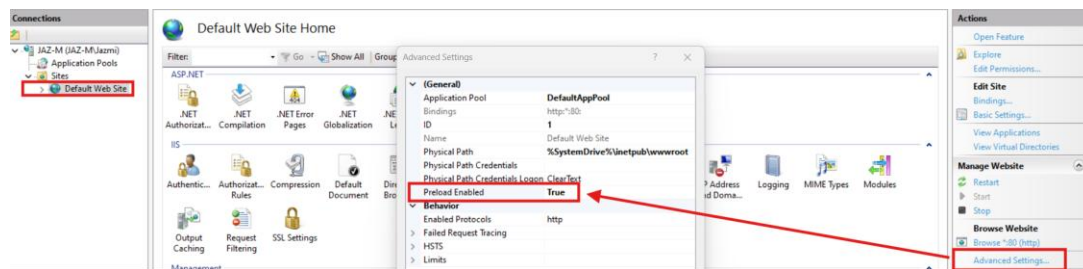
Start mode: select “Always running”.

It is necessary to make sure the IIS is not going to turn off the Application when it is not used. Otherwise, the schedule won’t job run.

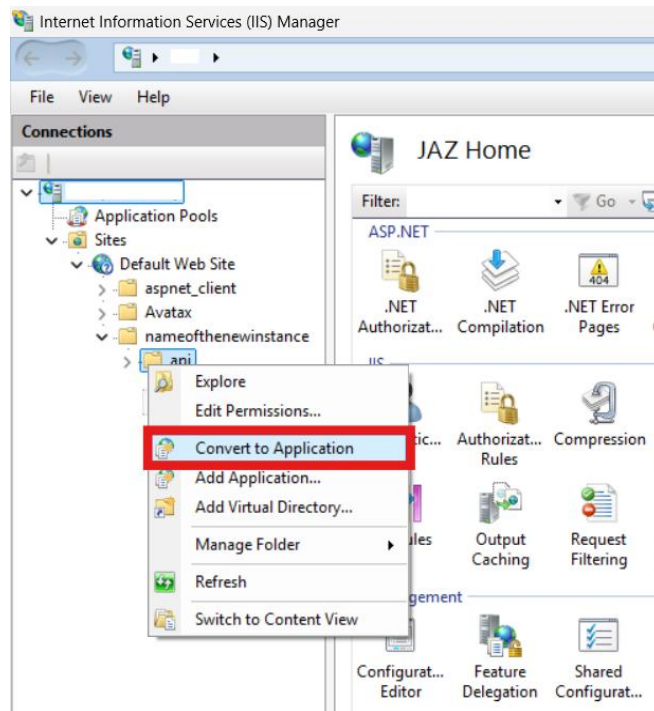
Identity: select “Local system” (if the client uses DI server)



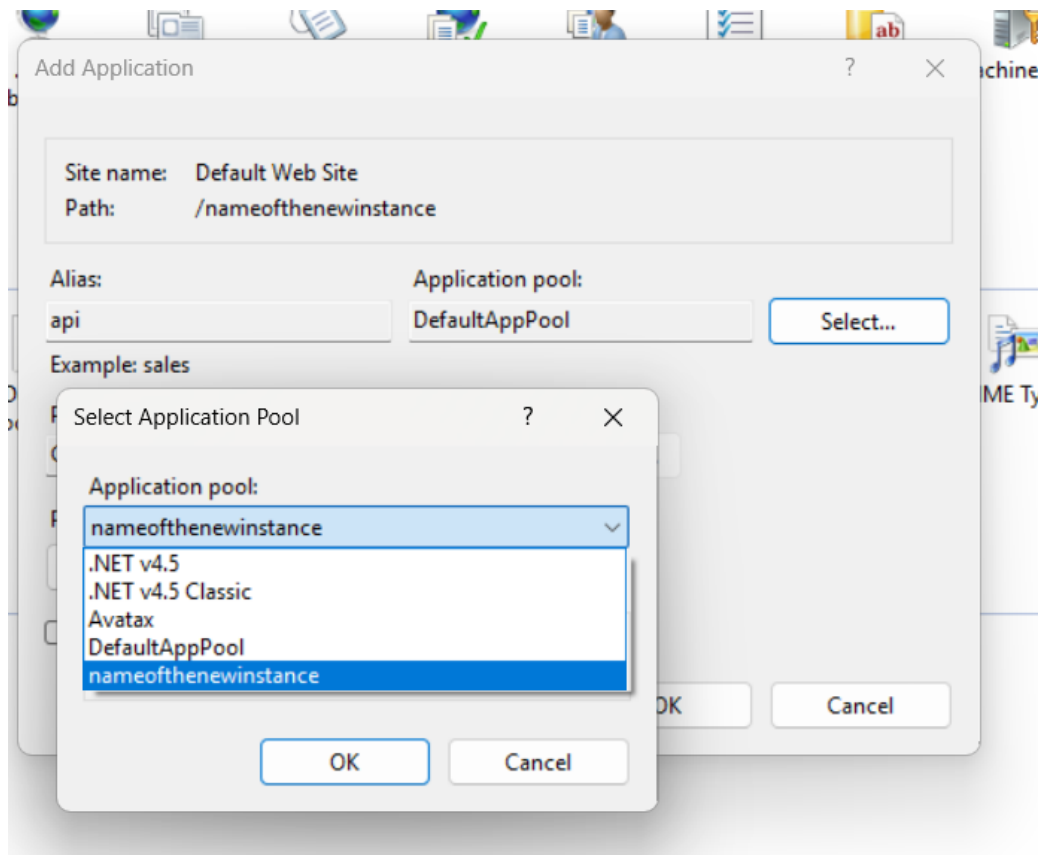
You need to change the preload to True on the Default Web Site



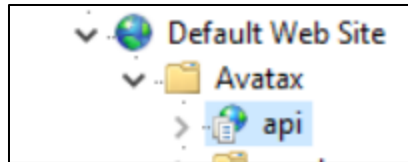
Then we need to convert the solution into an application. To do so, press right click on the "api" folder and select "convert to Application".



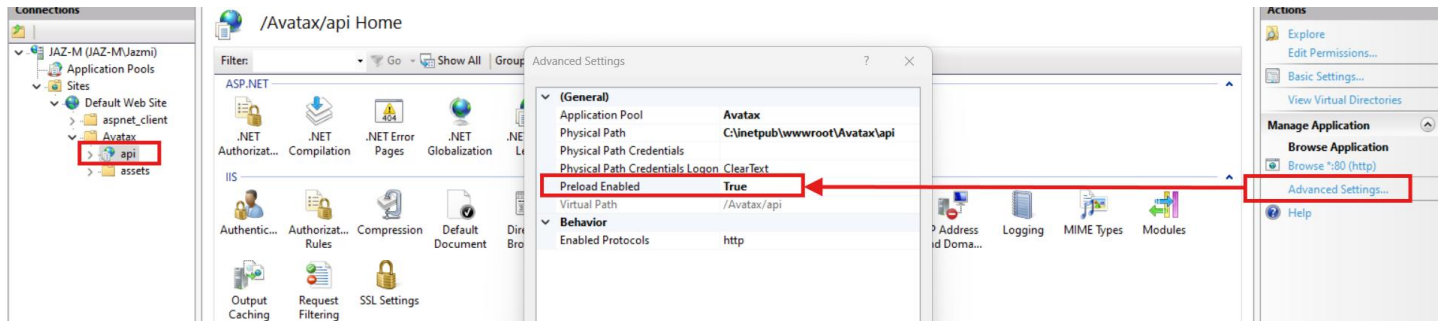
Afterwards, change the Application pool to “**nameofthenewinstance**”



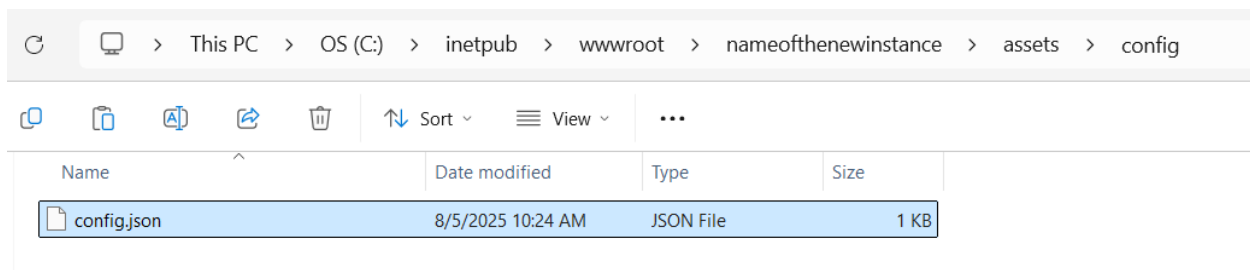
As a result the “api” folder must look like shown below because it was turned into an application



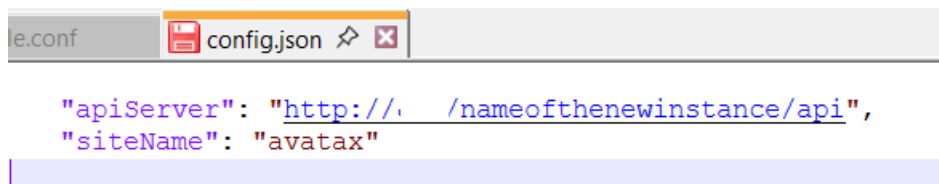
Once the application is created you must select and go to the advanced setting and change the preload to true



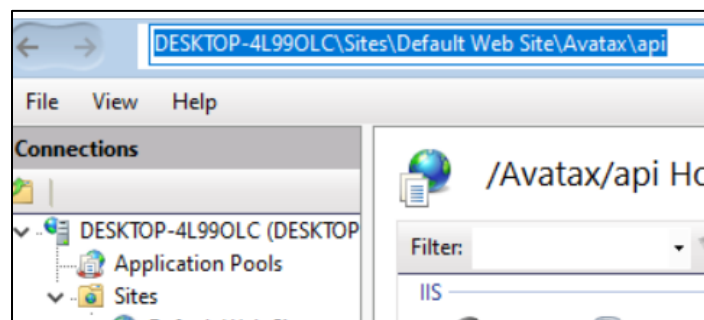
Now, open the JSON file and modify the URL accordingly.



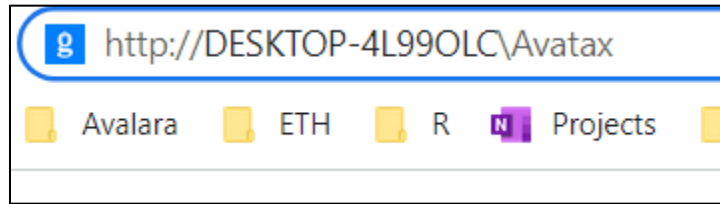
The below print shows the url to match with a specific local server. You should take the one for you.



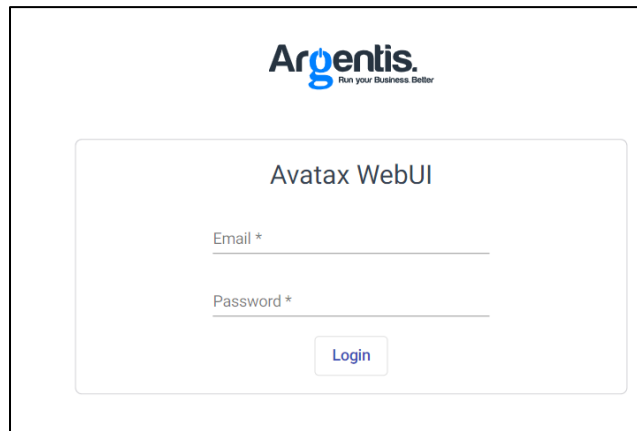
Copy the server's name from the ISS



Insert I the browser:



If everything is correct you should be able to access to the Web UI portal.

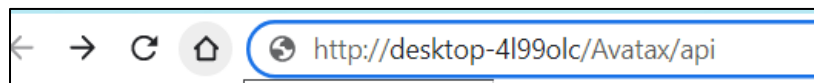


To Log in by DEFAULT :

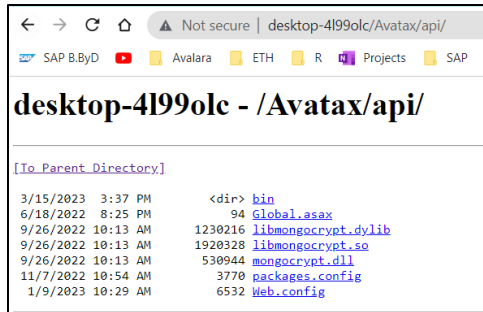
- User: admin@mail.com
- Password: \$b0admin..

2. Sanity check

To verify the installation was successfully done, you can type in the browser the same as before and add “/api”



If the installation is correct, you should see something like this



Otherwise, you might see something as shown :

HTTP Error 500.19 - Internal Server Error
The requested page cannot be accessed because the related configuration data for the page is invalid.

Detailed Error Information:		Requested URL	Physical Path	Logon Method	Logon User
Module	IIS Web Core	http://desktop-4l99olc:80/Avatax/api	C:\inetpub\wwwroot\Avatax\api	Not yet determined	Not yet determined
Notification	BeginRequest				
Handler	Not yet determined				
Error Code	0x80070021				
Config Error	This configuration section cannot be used at this path. This happens when the section is locked at a parent level. Locking is either by default (overrideModeDefault="Deny"), or set explicitly by a location tag with overrideMode="Deny" or the legacy allowOverride="false".				
Config File	\\?C:\inetpub\wwwroot\Avatax\api\web.config				

Config Source:

```

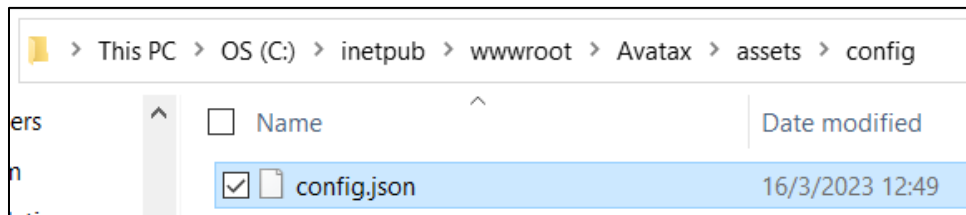
74: <directoryBrowse enabled="true" />
75: <handlers>
76:   <remove name="ExtensionlessUrlHandler-Integrated-4.0" />

```

More Information:
This error occurs when there is a problem reading the configuration file for the Web server or Web application. In some cases, the event logs may contain more information about what caused this error.
[View more information >](#)

This error is caused because in the json document the address is set up as a local host, but the application is installed on desktop XXX.

In order to fix it, open the JSON file and modify the URL accordingly.



The below print shows the url to match with a specific local server. Yo should take the one for you.

